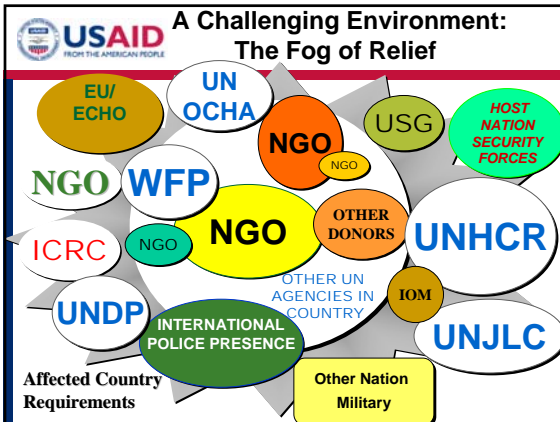


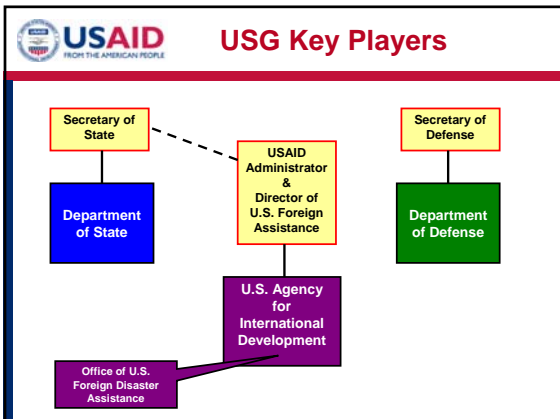
 **USAID**
FROM THE AMERICAN PEOPLE




Peter Morris
OFDA/TAG
October 2, 2008



Office of U.S. Foreign Disaster Assistance (OFDA)





 **OFDA's Role**

- Lead USG Agency for Humanitarian Assistance and Disaster Response
 - Organizes
 - Coordinates and
 - Reports the entire USG response
- US Military in Supporting Role for HA/DR



 **OFDA's Mandate**

- Save Lives
- Alleviate Human Suffering
- Reduce the Economic and Social Impact of Disasters



 **Fulfilling the Mandate**

1. Disaster Response



2. Mitigation & Disaster Risk Reduction

USAID FROM THE AMERICAN PEOPLE **Nutrition**




Response/Prevention/Mitigation
MAM and Maternal Malnutrition

- Research
RUSF; Best Practices; Implication of new standards
- Coordination
Nutrition cluster; IASC SCN; FFP, PEPFAR, Missions


USAID FROM THE AMERICAN PEOPLE **WASH**

2008 Directions



- Research
 - Evaluation model, using local universities
 - Best practices
- WASH cluster for coordination in emergencies
- Urban risk reduction strategy
- New water purification unit

USAID FROM THE AMERICAN PEOPLE **Geological Hazards**



- Improve Prompt Assessment of Global Earthquakes for Response (PAGER)
- Utilize remote sensing to support emergency volcano responses
- Develop Earthquake Rapid Response Team



Shelter and Settlements

- Continue to *integrate hazard mitigation into S&S interventions*
- Create a North American shelter sector network, based on '06 and '07 S&S workshops
- Support an electronic "scrapbook" of Better Shelter Practice to guide humanitarian shelter activities
- Participate in S&S peer review activities (e.g., Sphere Project)



Transitional Shelter, Java



Agriculture & Food Security



Home-made watering can, Mali

- APS for post-harvest seed storage
- Seed briefs translated & available
- Quarterly sector notes



Pests & Pesticides



- Surge capacity for pest & pesticide emergencies
- Community-based armyworm forecasting and monitoring research initiatives
- Enhanced host-country/regional capacity for ETOP prevention and mitigation through cutting edge technologies



Most Vulnerable Populations

Vulnerable Populations and Protection



- Global training outreach
- Focus on household energy and protection
- Expansion into justice system support and protection in natural disasters
- Assistance to widows, disabled, child-headed households



Economy & Market Systems:

- A move towards market-based interventions and away, where appropriate, from traditional commodity distribution (Development of the RMAT (see handout))
- Livelihoods Restoration workshop focusing on identification of best practice for livelihoods protection/rehabilitation amidst chronic displacement (Livelihoods Conference Handout)
- Expanded focus into urban livelihoods protection & disaster mitigation