

iAEM



MOVING INTO THE FUTURE

◆ MITIGATION

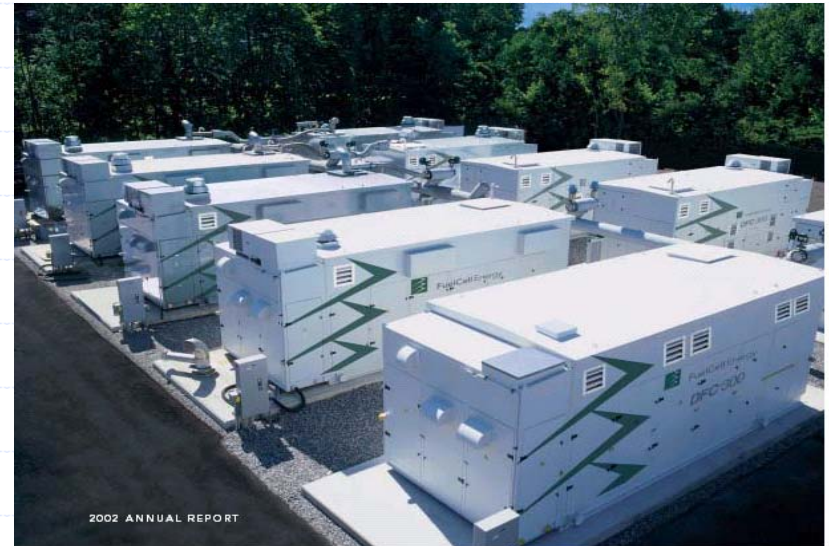
- ENVIRONMENTAL CLEAN-UP
- BUILDING CODES
- BUILDING LOCATIONS



MOVING INTO THE FUTURE

◆ ENVIRONMENTAL ISSUES

- POWER GENERATION
 - ◆ POLLUTION CONTROL
 - ◆ LOCAL GENERATION



MOVING INTO THE FUTURE

◆ TRANSPORTATION

- INTEGRATION OF TRANSPORTATION CENTERS AND EMERGENCY OPERATIONS CENTERS



MOVING INTO THE FUTURE

◆ MOVE TO PROFESSIONALISM

- INCREASED THREATS = INCREASED EMPHASIS
- INCREASED EMPHASIS = INCREASED CAPABILITIES
- INCREASED CAPABILITIES DEMAND BETTER EDUCATION, PROFESSIONALISM AND STATUS

MOVING INTO THE FUTURE

◆ EMERGENCY MANAGEMENT EDUCATION

■ BASICS

- ◆ CRIMINAL JUSTICE
- ◆ SEISMOLOGY
- ◆ METEOROLOGY
- ◆ CHEMISTRY
- ◆ PUBLIC ADMINISTRATION
- ◆ COMMUNITY PLANNING
- ◆ PUBLIC HEALTH

MOVING INTO THE FUTURE

◆ REGIONALIZATION

- METRO AREAS (PLAN INTEGRATION)
- RURAL (ECONOMY OF SCALE)

◆ SHARED VISIONS

- MULTI-DISCIPLINE OFFICE
- INTEROPERABILITY (TRAINING, COMMUNICATIONS, LANGUAGE, CULTURE)

MOVING INTO THE FUTURE

◆ MIRROR NATIONAL POLICIES

- NAME
- COORDINATION
- CAPABILITIES AS APPROPRIATE

J. R. THOMAS
PRESIDENT
INTERNATIONAL ASSOCIATION OF
EMERGENCY MANAGERS
WWW.IAEM.COM

