

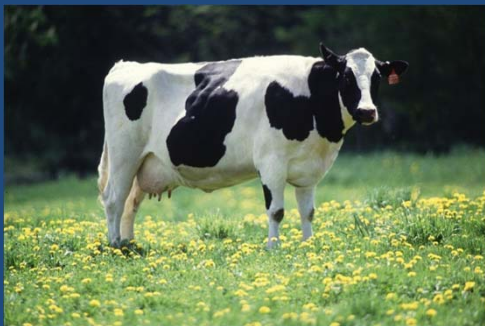
**Committee on Anthropogenic Methane Emissions in the US:
Improving Measurement, Monitoring, Presentation of
Results, and Development of Inventories**

Industry stakeholder perspectives on
methane emissions, measurement
methodologies, and user needs

Webinar: April 27, 2017, 1-3pm ET

Statement of Task

- Examine approaches to measuring, monitoring, presenting, and developing inventories of anthropogenic emissions of methane to the atmosphere
- Covers predominant sources of anthropogenic methane emissions
- Specifically for U.S.
 - although report could be relevant internationally



Today's speakers

- **Matthew Harrison**, AECOM – gaps in knowledge for quantifying methane emissions in the natural gas sector and overall industry perspectives of methane activities
- **Chris Moore**, Gas Technology Institute – overview of GTI methane projects and use of new technologies to measure emissions
- **Kerry Kelly**, WM Waste Management – landfill methane estimates for the U.S. GHG Inventory and GHG Reporting Program
- **Roger Green**, WM Waste Management – measurement of landfill methane emissions
- **Özgen Karacan**, Petroleum Engineer, U.S. Geological Survey – measurement approaches for methane emissions from coal mines
- **Juan Tricarico**, Innovation Center for U.S. Dairy – Cow of the Future® and methane emissions reductions activities within the dairy industry